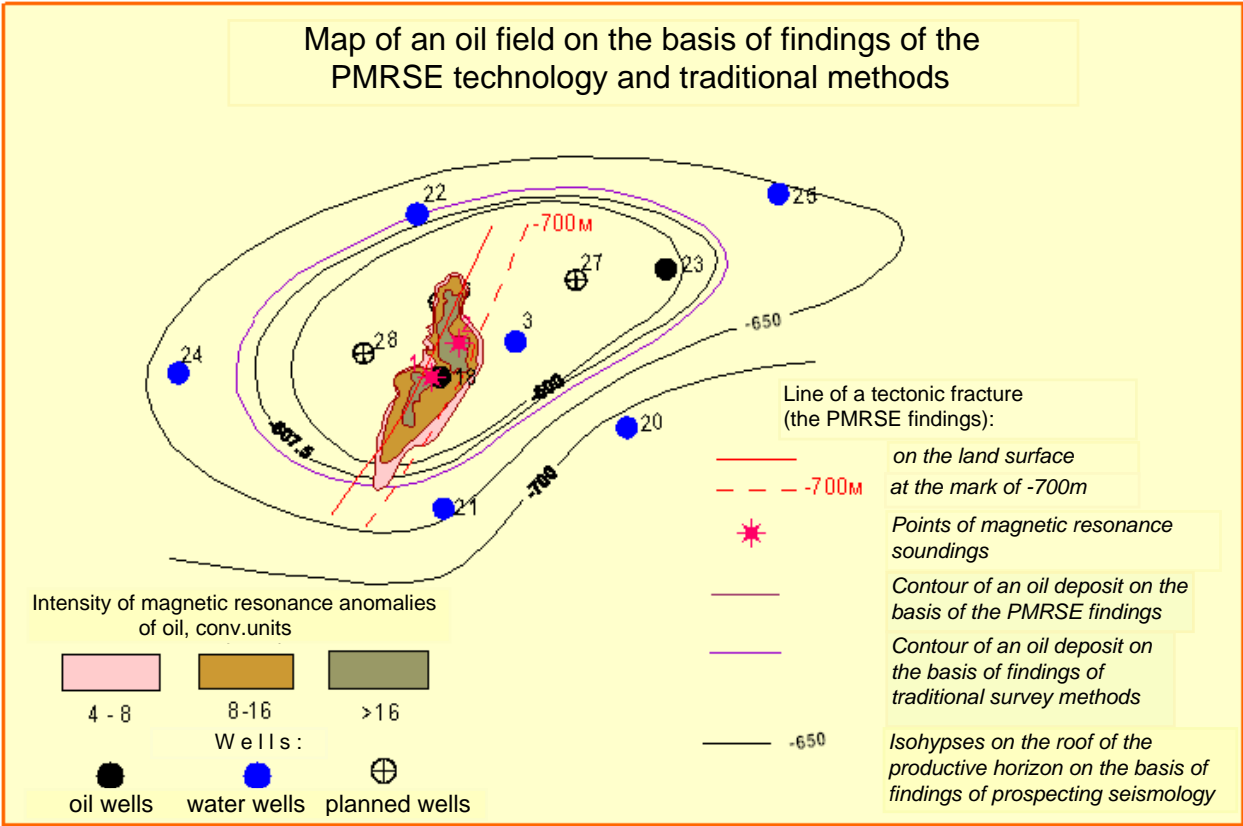
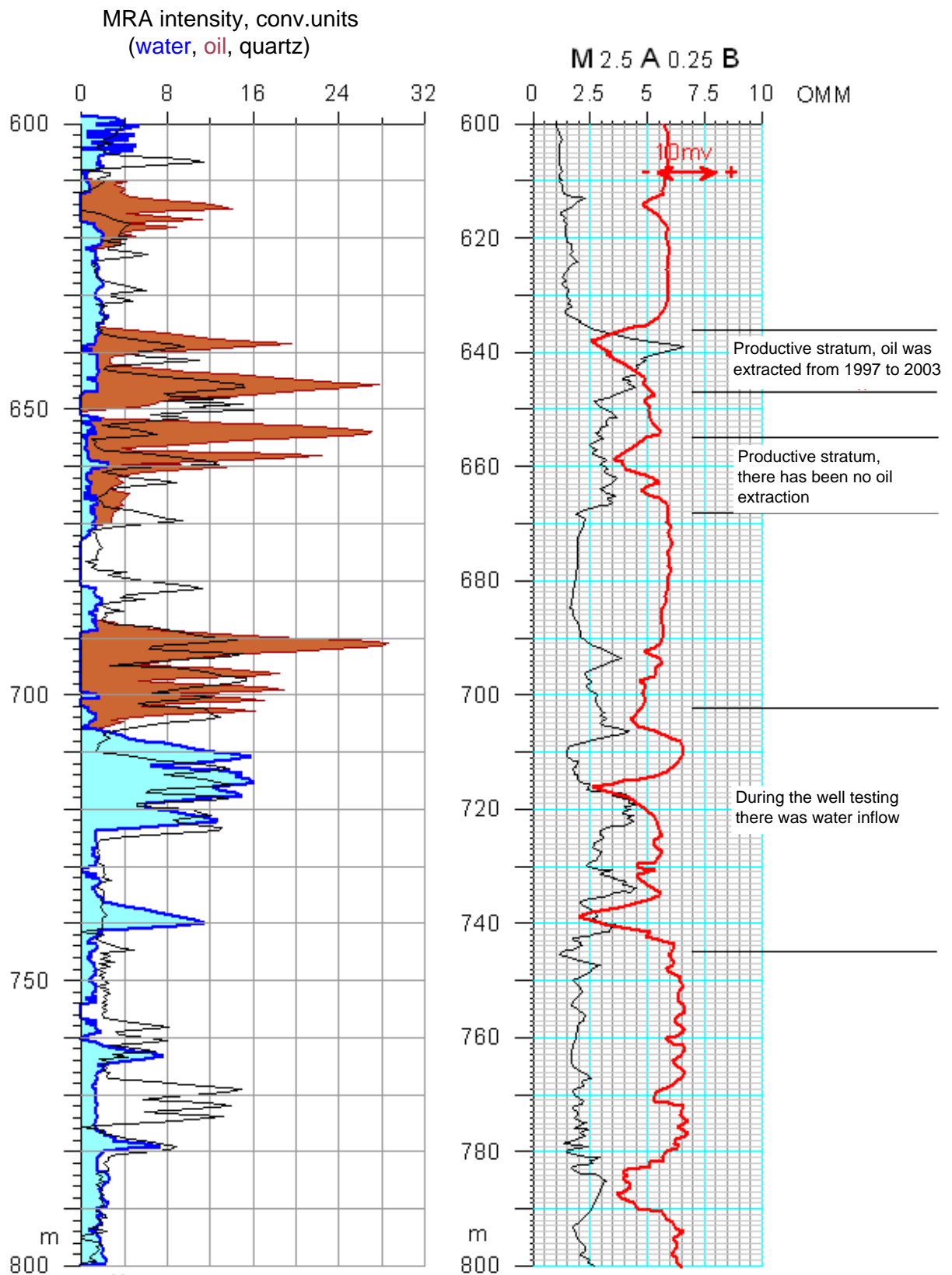


# Investigations at an oil deposit, the Crimea. Comparison of findings obtained using the PMRSE technology and traditional methods.



# Results of passive remote magnetic resonance sounding and standard logging of the well No.18



*Magnetic resonance anomalies of quartz correspond to layers of sandstone in a geologic cross-section*

# Exploration of hydrogeological settings at natural gas fields

